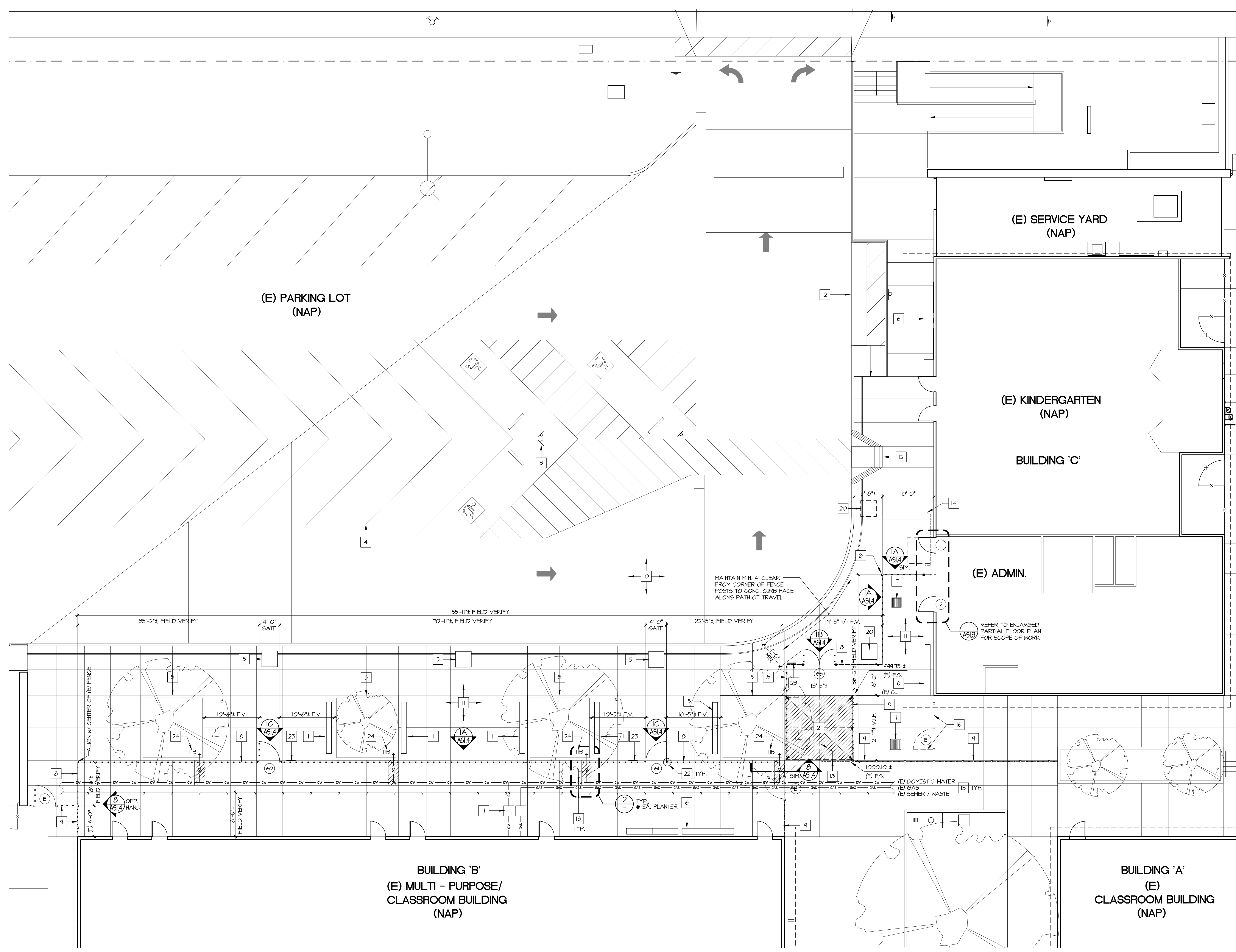
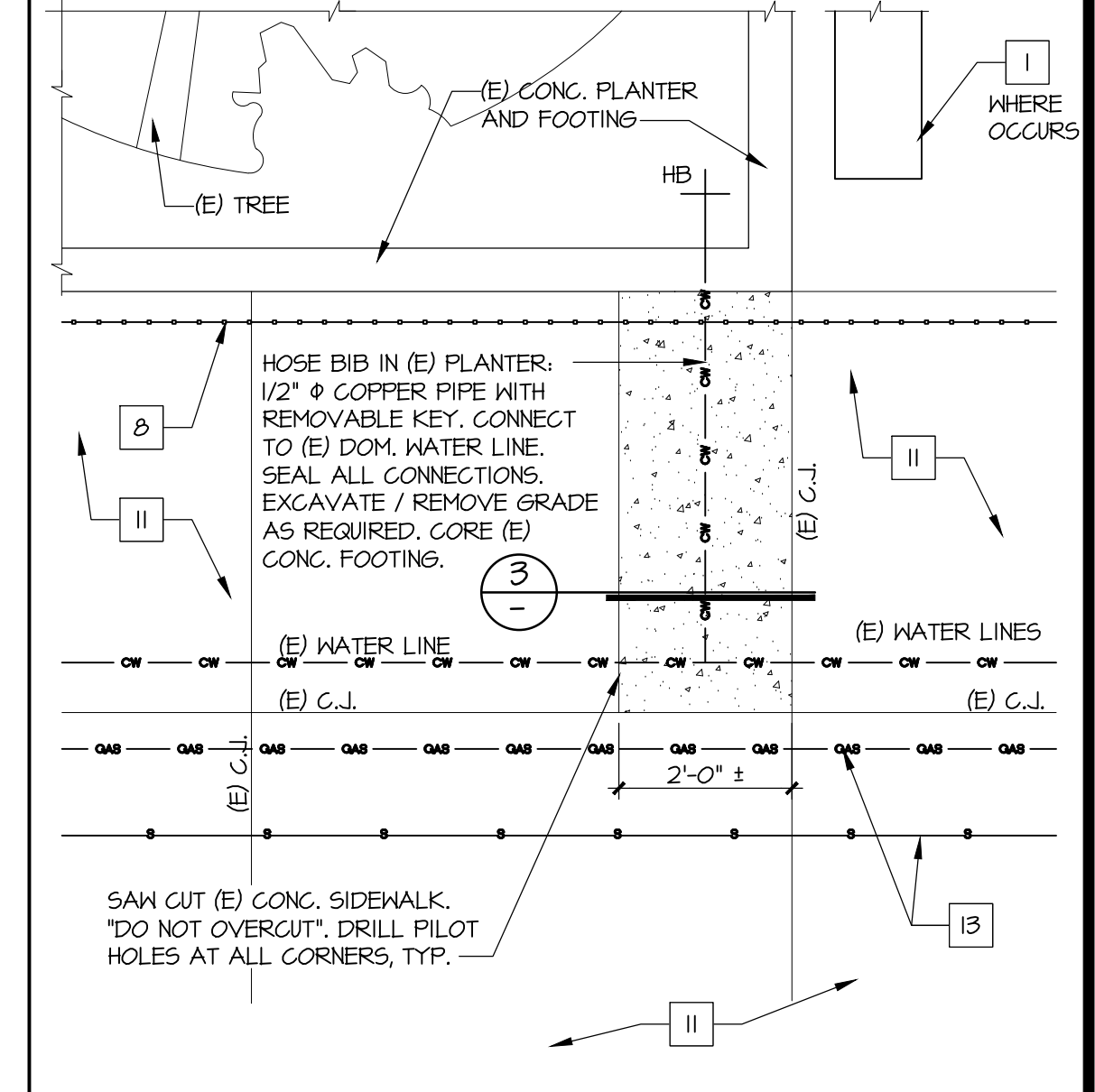


EAST NACORA STREET

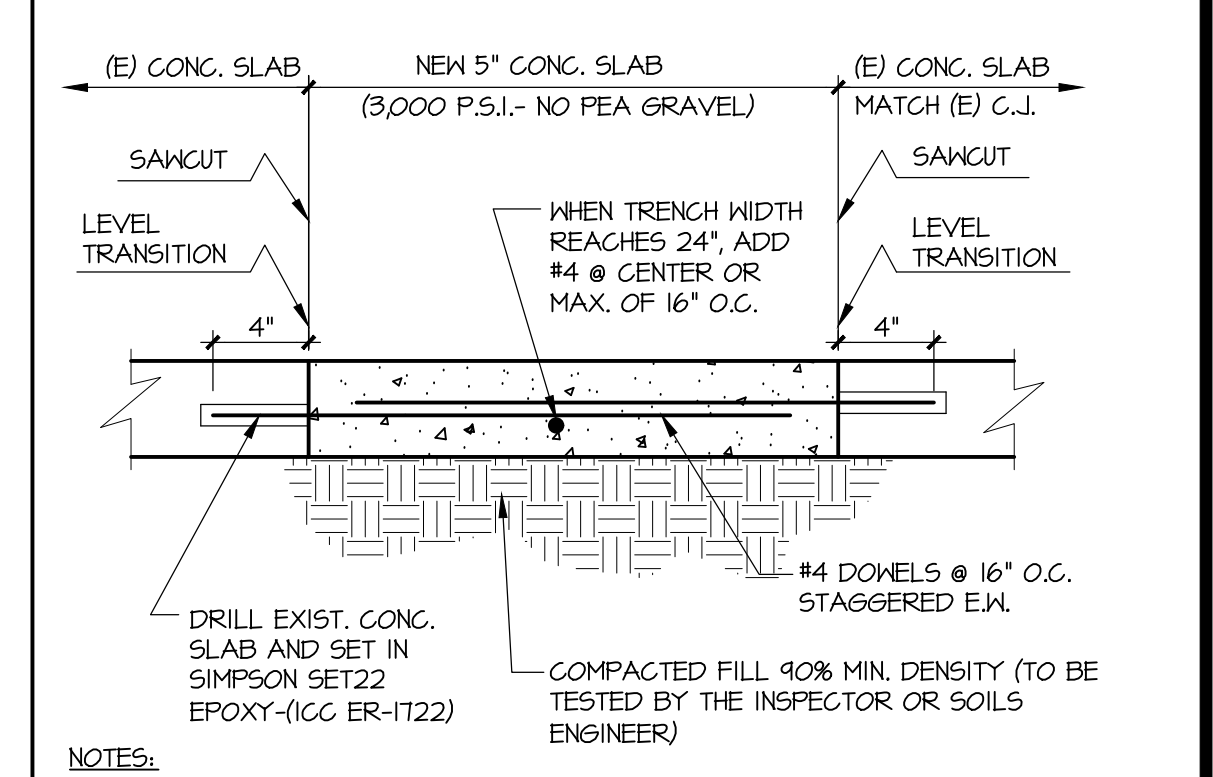


KEYNOTES

- REFERENCE KEYNOTES ON THIS PLAN APPLY TO THIS SHEET ONLY.
- 1 IN-GROUND 10' LONG x 10' WIDE BENCHES, WITHOUT BACK BY HABASH VALLEY, MODEL #56328(D) TO MATCH (E) BENCHES, DISTRIBUTED BY DAVE BANG ASSOCIATES, INC. PAINT TO MATCH (E) BENCHES. (PHONE: 800-664-2585), EMAIL: INFO@DAVEBANG.COM
 - 2 "NOT USED."
 - 3 (E) ADA PARKING SIGNAGE, PROTECT.
 - 4 (E) 4' WIDE WHITE STRIPING, PROTECT.
 - 5 (E) PERMANENT PLANTER / MOVABLE PLANTERS, PROTECT.
 - 6 (E) METAL BENCHES, PROTECT.
 - 7 (E) U.S. UTILITY VAULT / FULL BOX, PROTECT.
 - 8 METAL ORNAMENTAL FENCE AND GATES, REFER TO: (1) ASI.4
 - 9 (E) ORNAMENTAL FENCE / GATES, MODIFY AS REQUIRED, PROTECT.
 - 10 (E) PAVING, PROTECT.
 - 11 (E) CONCRETE SIDEWALK / PAVING, REFER TO TOPOGRAPHIC SURVEY FOR (E) FINISH SURFACE ELEVATION.
 - 12 (E) ACCESSIBLE CURB RAMPS, PROTECT.
 - 13 (E) APPROXIMATE LOCATIONS OF UNDERGROUND (U.G.) UTILITIES. CONTRACTOR SHALL FIELD VERIFY EXACT DEPTH / LOCATIONS TO CLEAR PROPOSED FENCE CONCRETE FOOTINGS, IF CONFLICTS OCCUR NOTIFY DISTRICT / ARCHITECT FOR DIRECTION, PRIOR TO PROCEEDINGS. FOR ADDITIONAL INFORMATION, REFER TO TYPICAL DEMOLITION NOTE #11 SHEET T-2, "NO EXCEPTIONS".
 - 14 (E) METAL BENCH TO BE RELOCATED IN ITS ENTIRETY. DO NOT DAMAGE BENCH POSTS. IF DAMAGED, REPLACE IN KIND TO MATCH (E) AT NO ADDITIONAL COST TO DISTRICT. PATCH / REPAIR (E) CONC. SIDEWALK TO MATCH (E).
 - 15 RELOCATED (E) METAL BENCH FROM ADMIN. BLDG. CORE / INSTALL TO CONC. SIDEWALK TO MATCH (E).
 - 16 PORTION OF (E) 6'-0" HIGH METAL GATE / FENCING / POSTS TO BE REMOVED. PATCH / REPAIR CONC. SLAB / METAL FRAMES, ETC.
 - 17 (E) AREA DRAIN, PROTECT.
 - 18 PROVIDE (N) HB. IN (E) PLANTERS; SAH-CUT (E) CONC. SIDEWALK, EXTEND PIPING / MAKE ALL NECESSARY CONNECTIONS REQUIRED. PATCH / REPAIR (E) CONC. SIDEWALK TO MATCH (E).
 - 19 (E) PLANTER TO BE RELOCATED, PROTECT, RE-PAINT YELLOW STRIPE TO MATCH (E).
 - 20 EXISTING CONCRETE SIDEWALK TO BE REMOVED AT (E) JOINTS. FIELD VERIFY EXACT LOCATIONS. PROVIDE SLOPED CONC. SIDEWALK TO MATCH (E) TEXTURE / PATTERN / JOINTS, ETC. MAX. RUNNING SLOPE = 5%, CROSS SLOPE 2% MAX, REFER TO: (1/4) ASI.4 SIM.
 - 21 TYPICAL POST FOOTINGS, FOR SPACING / LOCATIONS, REFER TO: (2) ASI.3
 - 22 DIRECTIONAL SIGNAGE, REFER TO: (2) ASI.3
 - 23 FOR COPPER LINE TO NEW HOSE-BIB, USE "K"-TYPE COPPER IN A "BURRIAL SOCKS". PROVIDE A SHUT-OFF BALL VALVE AT EACH HOSE BIB RISER.



HOSE BIB AT PLANTER SCALE: 1/2" = 1'-0"



- NOTES:**
1. PRIOR TO PLACEMENT OF PAVING, EARTH COMPACTION TO BE CERTIFIED IN WRITING BY THE DISTRICT APPROVED SOILS ENGINEER OR INSPECTOR THAT IT HAS BEEN COMPACTED TO A MIN. OF 90% DENSITY.
 2. WHERE EXISTING CONTROL JOINTS OR SCORE JOINTS ABUT PAVING, CONTINUE THOSE JOINTS (MATCH EXISTING) THROUGH THE NEW PAVING.
 3. MATCH EXISTING ADJACENT CONCRETE FINISH.
 4. WHERE NO CONTROL OR SCORE JOINTS OCCUR AT EXISTING CONCRETE PAVING, PROVIDE SCORE JOINTS AND CONTROL JOINTS AS FOLLOWS:
 - a. SCORE JOINTS @ 5'-0" O.C.
 - b. CONTROL JOINTS @ 20'-0" O.C.
 5. NO SACK MIX PERMITTED.

CONCRETE PAVING TRENCH PATCH SCALE: 1/2" = 1'-0"

TYPICAL NOTES

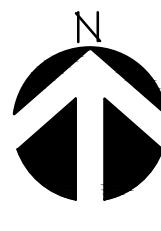
1. FOR ADDITIONAL TYPICAL / GENERAL NOTES, REFER TO: (T-2)
2. REFER TO SHEET ASI.4 FOR ADDITIONAL TYPICAL INFORMATION.
3. FIELD VERIFY ALL DIMENSIONS, PRIOR TO PROCEEDINGS. ALIGN W/ (E) FENCING.
4. CONTRACTOR SHALL LOCATE (E) UG UTILITIES, PRIOR TO PROCEEDINGS.
5. FOR GATE HARDWARE, REFER TO: (ASI.4)

LEGEND

- PROPERTY LINE
- HROUGHT IRON FENCE
- (E) HROUGHT IRON FENCE
- (E) CHAIN-LINK FENCE
- (E) HROUGHT IRON FENCE - DEMOLITION

GATE NUMBER: FOR GATE / DOOR HARDWARE
DOOR NUMBER, INFO, REFER TO:

NOTE:
 CONTRACTOR SHALL FIELD VERIFY ALL DIMENSION AND REPORT ALL DISCREPANCIES TO ARCHITECT AND DISTRICT, PRIOR TO PROCEEDINGS.



ENLARGED PARTIAL SITE PLAN

SCALE: 1/8" = 1'-0"

DESIGNED BY: AER	DRAWN BY: CM	CHECKED BY: JFP
NO.	DATE	REVISION

DESIGNED BY: AER
 DRAWN BY: CM
 CHECKED BY: JFP

ZIEMBA + PRIETO ARCHITECTS
 601 South Clemons Blvd. • Suite 400 • Burbank, CA 91502
 P: (818) 841-2888 • F: (818) 841-7782 • www.ziembaandprieto.com

ENLARGED PARTIAL SITE PLAN
SHELYN ELEMENTARY SCHOOL
 1950 E NACORA ST
 ROLAND HEIGHTS, CA 91748

C-33216
 RENEWAL DATE
 NOV. 30, 2017

DATE: 04/03/17
 JOB NO.: 160504

SHEET NO.
ASI.2